

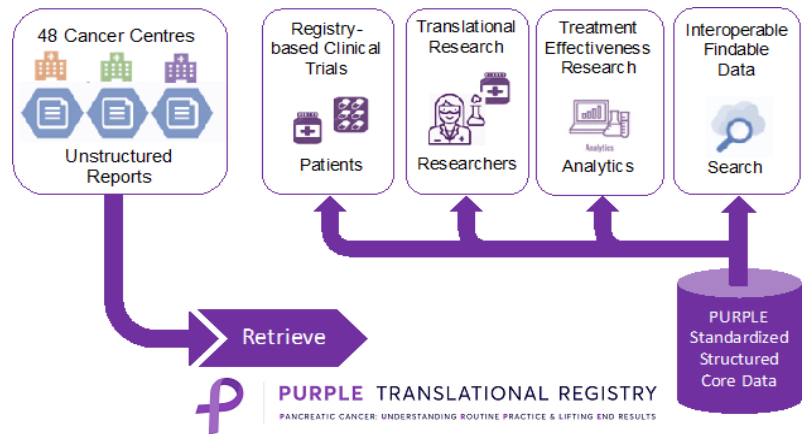


PURPLE TRANSLATIONAL REGISTRY

PANCREATIC CANCER: UNDERSTANDING ROUTINE PRACTICE & LIFTING END RESULTS

In this edition:

- Welcome to new sites
- New PURPLE Website - 2023
- Current studies & trials
- Research progress:
 - Onboarding new regionals
 - Research using PURPLE
- Congratulations Belinda!



Welcome to the new sites who have recently joined PURPLE:

- Mildura Base Public Hospital, Vic
- Toowoomba Base Hospital, QLD
- Newcastle Private Hospital, NSW
- Canberra Hospital, ACT (re-activated)

If your hospital or cancer centre is interested in joining the PURPLE Registry and contributing data as a participating site, please contact us:

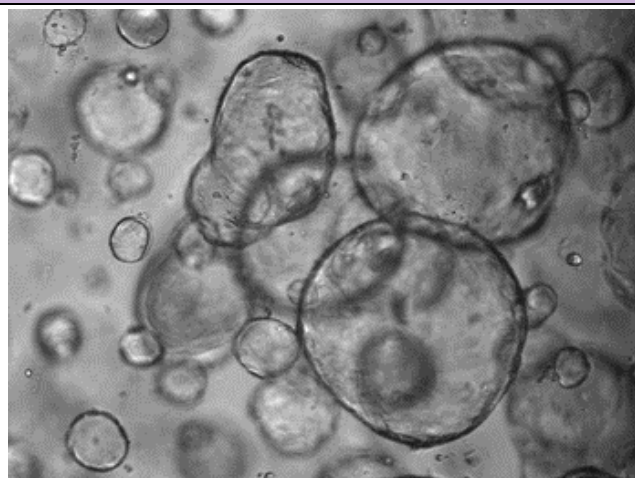
Email: purplepancreas@wehi.edu.au

Launching soon - PURPLE Website

Our new **PURPLE Translational Registry website** has been designed to bring together information for clinicians, researchers and patients to:

- Provide easier access to resources on pancreatic cancer
- Create an online portal for data sharing and research collaboration requests across treatment centres and research labs.
- Provide up-to-date curated listings of current pancreatic cancer clinical trials available in Australia for both patients and clinicians.
- facilitate translational research opportunities by assisting clinicians & researchers to access PURPLE Registry data and specimens for study.

Current trials supported by the PURPLE Translational Registry



DIRECT / InspIRE – chemotherapy + NanoKnife in unresectable stage III pancreatic cancer.

Biobank for Personalised Medicine – Organoid project – leftover fresh tissue samples are used to grow 3-D tissue like structures (organoids).

Australian Pancreatic Cancer Familial Screening Program - led by Alina Stoita, SVHS.

DYNAMIC-Pancreas – use of circulating tumour DNA in early stage resected pancreatic cancer (AGITG)

For more information on recruiting studies, please contact: Roslynn.Stirzaker@mh.org.au

Research progress

Supporting regional & rural centres to participate in PURPLE – Mildura Base Public Hospital joins PURPLE

The PURPLE team have successfully supported the Clinical Trials Unit at Mildura Base Public Hospital (MBPH) in joining the PURPLE Registry study.

MBPH is one of six clinical trial sites in regional Victoria who have partnered with Cancer Trials Australia (CTA) under the umbrella of The Regional Trial Network Victoria (RTN-Vic). As part of an initiative funded by the Medical Research Future Fund (MRFF), the ReViTALISE project aims to provide equal access to high quality cancer care for Victorians living in regional and rural settings and improve cancer outcomes by increasing participation in clinical trials. With help from ReViTALISE and the Alfred Health TrialHub, MBPH opened their Clinical Trials Unit in February this year.

With the unit established, the clinical trials team at MBPH began the process of seeking out their first trial. In late August, they submitted an expression of interest to join the PURPLE Registry.

The Gibbs Lab/WEHI Ethics and Governance team at PURPLE worked closely with the manager of the Clinical Trials Unit at MBPH along with the clinical trials start-up team at CTA, to accelerate their efforts to apply for human research ethics committee (HREC) approval. To ensure project milestones remained on track, an expedited ethics review was sought from Melbourne Health. HREC approval was successfully achieved within 5 weeks of the site expression of interest. An amazing effort and great outcome for all involved!

We look forward to MBPH submitting their first patient to the PURPLE Registry and to their ongoing partnership and collaboration.

- ❖ *If you're a regionally based centre looking to extend the opportunity for your patients to access quality clinical trials and wish to join PURPLE, please get in touch with us at: purplepancreas@wehi.edu.au*



Some of our collaborator's current research projects that are leveraging PURPLE Registry data

- ❖ Early-stage pancreatic cancer outcomes in the public and private setting.
- ❖ Linking pancreatic cancer and primary care data.
- ❖ Incidence and referral patterns for pancreatic cancer.
- ❖ Investigating treatment responses, therapy and molecular characterization patterns in pancreatic cancer.
- ❖ Disparities in management and outcomes for patients with pancreatic cancer in rural versus metropolitan Australia – a retrospective cohort study.
- ❖ Neoadjuvant versus adjuvant chemotherapy for upfront resectable pancreatic ductal adenocarcinoma – a multicentre Australasian analysis.

PURPLE Registry Snapshot

Working with our partners and collaborators, here's a snapshot of what we've achieved:

4375

Patients with pancreatic cancer disease data recorded in the PURPLE Registry

48

Participating sites who contribute data to PURPLE

46

Research studies and projects that have utilised PURPLE Registry data

5

Research trials and initiatives supported by the PURPLE Registry

Congratulations Belinda!



Our very own PURPLE Principal Investigator, Dr. Belinda Lee, recently presented her PhD Completion Seminar in front of a packed auditorium at the WEHI.

Belinda's PhD focuses on characterising the systemic and tumour specific immune profile in pancreatic cancer. By utilizing multi-omics techniques to explore blood and tissue-based protein and immune markers, Belinda's research has created a large fully annotated pancreatic cancer data set. This work provides crucial insights to determine barriers and resistance mechanisms, define optimal selection criteria for treatments and inform future therapeutic design.

Belinda is pictured here after presenting her thesis and with her PhD supervisor, A/Prof. Tracy Putoczki.

The PURPLE team extend our thanks to all existing and on-boarding sites for being part of the ever-expanding PURPLE Translational Platform and its repertoire of pancreatic cancer clinical trials and research studies. We eagerly await the results of upcoming presentations and publications that leverage the data from PURPLE's real-world population and remain committed to facilitating better research, better care and better outcomes for all patients.

The PURPLE Registry was established in 2016 by Dr. Belinda Lee and operates out of the Gibbs Lab in the Personalised Oncology Division at the Walter and Eliza Hall Institute of Medical Research in Parkville, Victoria.

Contact us: purplepancreas@wehi.edu.au

